

1:5000

Biāogōngdù



7-326

7-327/1

7-327/2

2-331

2-366

2-362

2-451

2-330

2-365

2-329

2-332

2-364

2-365

2-363

2-327

2-333

2-337

1319

2-334

2-336

2-362

2-326

2-335

2-338/1

2-338/1

2-325

2-338/2

2-339

2-324

2-340

2-323

2-321

2-341

2-320

2-342/1

2-342/2

2-318

2-318

2-317

2-309

2-316

2-312/2

2-311

2-308

2-302

2-322/2

2-310

2-301

2-300

2-299

2-298

2-297

2-322/1

2-307

2-303

2-293

42-232/1

2-306/2

2-305

2-296

2-465

2-304/2

2-470

2-294

42-200/1

2-471

42-232/2

2-452



CIEMNOSZYŃE

M: 5000



40-735

7-270/1

7-270/2

7-271
7-272
7-273

7-273

36-575

36-576

36-577

36-578

36-579

36-601

36-614

36-612

36-610/1

36-610/6

36-610/5

36-561/1

36-402

36-401

36-339/1

36-514

36-515

36-551

36-558

36-539

36-548 36-549 36-550

36-579

36-580

36-581

36-582

36-583

36-602

36-603

36-604

36-605/36

36-585

36-586

36-584

36-587

36-588

36-589

36-590

36-591

36-592

36-593

36-594

36-595

36-596

36-597

36-598

36-599

36-600

36-610/3

36-610/4

36-610/5

36-610/6

36-610/7

36-610/8

36-610/9

36-610/10

36-610/11

36-610/12

36-610/13

36-610/14

36-610/15

36-610/16

36-610/17

36-610/18

36-610/19

36-610/20

36-610/21

36-610/22

36-610/23

36-610/24

36-610/25

36-610/26

36-610/27

36-610/28

36-610/29

36-610/30

36-610/31

36-610/32

36-610/33

36-610/34

36-610/35

36-610/36

36-610/37

36-610/38

36-610/39

36-610/40

36-610/41

36-610/42

36-610/43

36-610/44

36-610/45

36-610/46

36-610/47

36-610/48

36-610/49

36-610/50

36-610/51

36-610/52

36-610/53

36-610/54

36-610/55

36-610/56

36-610/57

36-610/58

36-610/59

36-610/60

36-610/61

36-610/62

36-610/63

36-610/64

36-610/65

36-610/66

36-610/67

36-610/68

36-610/69

36-610/70

36-610/71

36-610/72

36-610/73

36-610/74

36-610/75

36-610/76

36-610/77

36-610/78

36-610/79

36-610/80

36-610/81

36-610/82

36-610/83

36-610/84

36-610/85

36-610/86

36-610/87

36-610/88

36-610/89

36-610/90

36-610/91

36-610/92

36-610/93

36-610/94

36-610/95

36-610/96

36-610/97

36-610/98

36-610/99

36-610/100

36-610/101

36-610/102

36-610/103

36-610/104

36-610/105

36-610/106

36-610/107

36-610/108

36-610/109

36-610/110

36-610/111

36-610/112

36-610/113

36-610/114

36-610/115

36-610/116

36-610/117

36-610/118

36-610/119

36-610/120

36-610/121

36-610/122

36-610/123

36-610/124

36-610/125

36-610/126

36-610/127

36-610/128

36-610/129

36-610/130

36-610/131

36-610/132

36-610/133

36-610/134

36-610/135

36-610/136

36-610/137

36-610/138

36-610/139

36-610/140

36-610/141

36-610/142

36-610/143

36-610/144

36-610/145

36-610/146

36-610/147

36-610/148

36-610/149

36-610/150

36-610/151

36-610/152

36-610/153

36-610/154

36-610/155

36-610/156

36-610/157

36-610/158

36-610/159

36-610/160

36-610/161

36-610/162

36-610/163

36-610/164

36-610/165

36-610/166

36-610/167

36-610/168

36-610/169

36-610/170

36-610/171

36-610/172

36-610/173

36-610/174

36-610/175

36-610/176

36-610/177

36-610/178

36-610/179

36-610/180

36-610/181

36-610/182

36-610/183

36-610/184

36-610/185

36-610/186

36-610/187

36-610/188

36-610/189

36-610/190

36-610/191

36-610/192

36-610/193

36-610/194

36-610/195

36-610/196

36-610/197

36-610/198

36-610/199

36-610/200

36-610/201

36-610/202

36-610/203

36-610/204

36-610/205

36-610/206

36-610/207

36-610/208

36-610/209

36-610/210

36-610/211

36-610/212

36-610/213

36-610/214

36-610/215

36-610/216

36-610/217

36-610/218

36-610/219

36-610/220

36-610/221

36-610/222

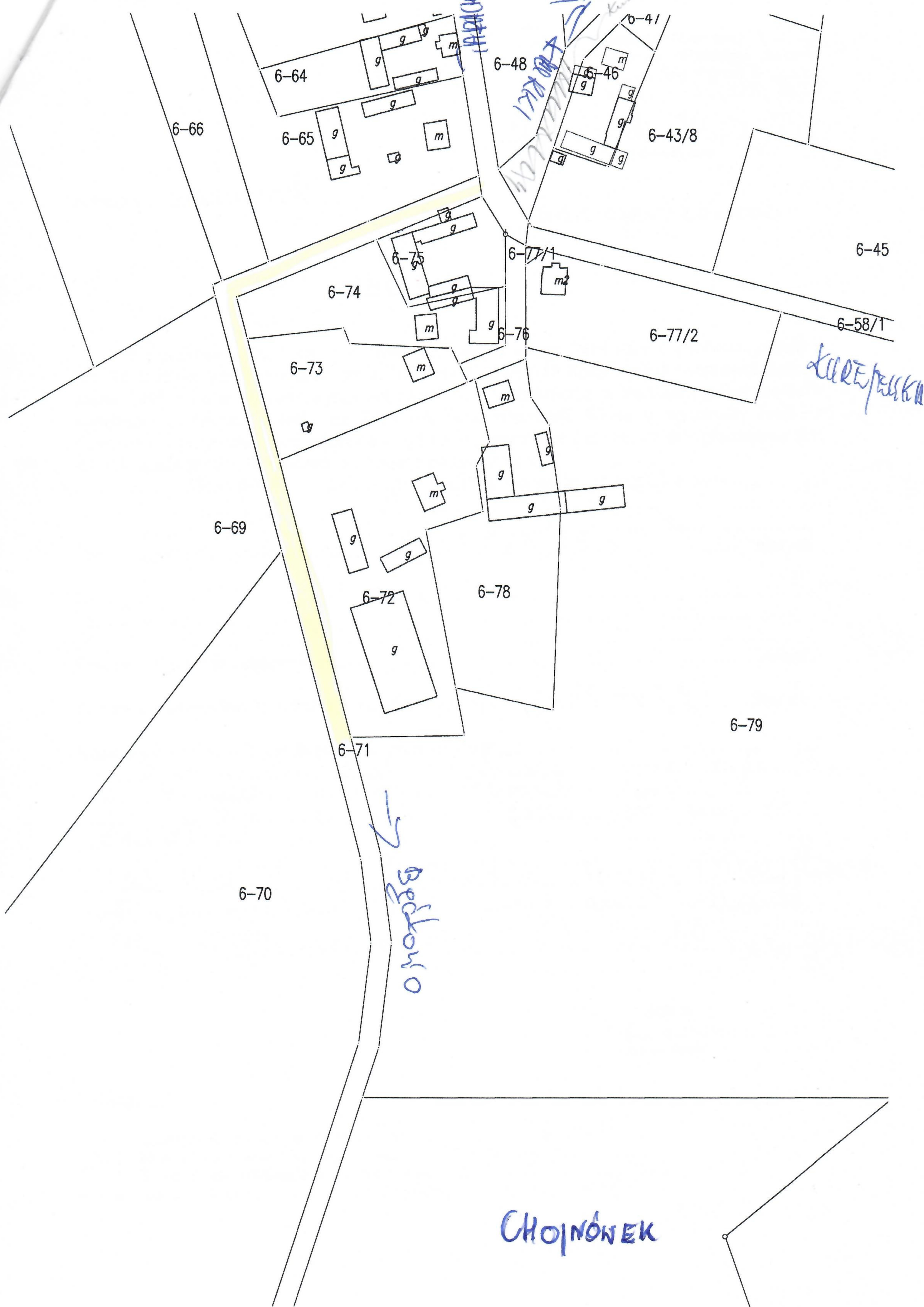
36-610/223

36-610/224

36-610/225

36-610/226

36-61



1:1000
DYBTA



1:5000

DIBLA



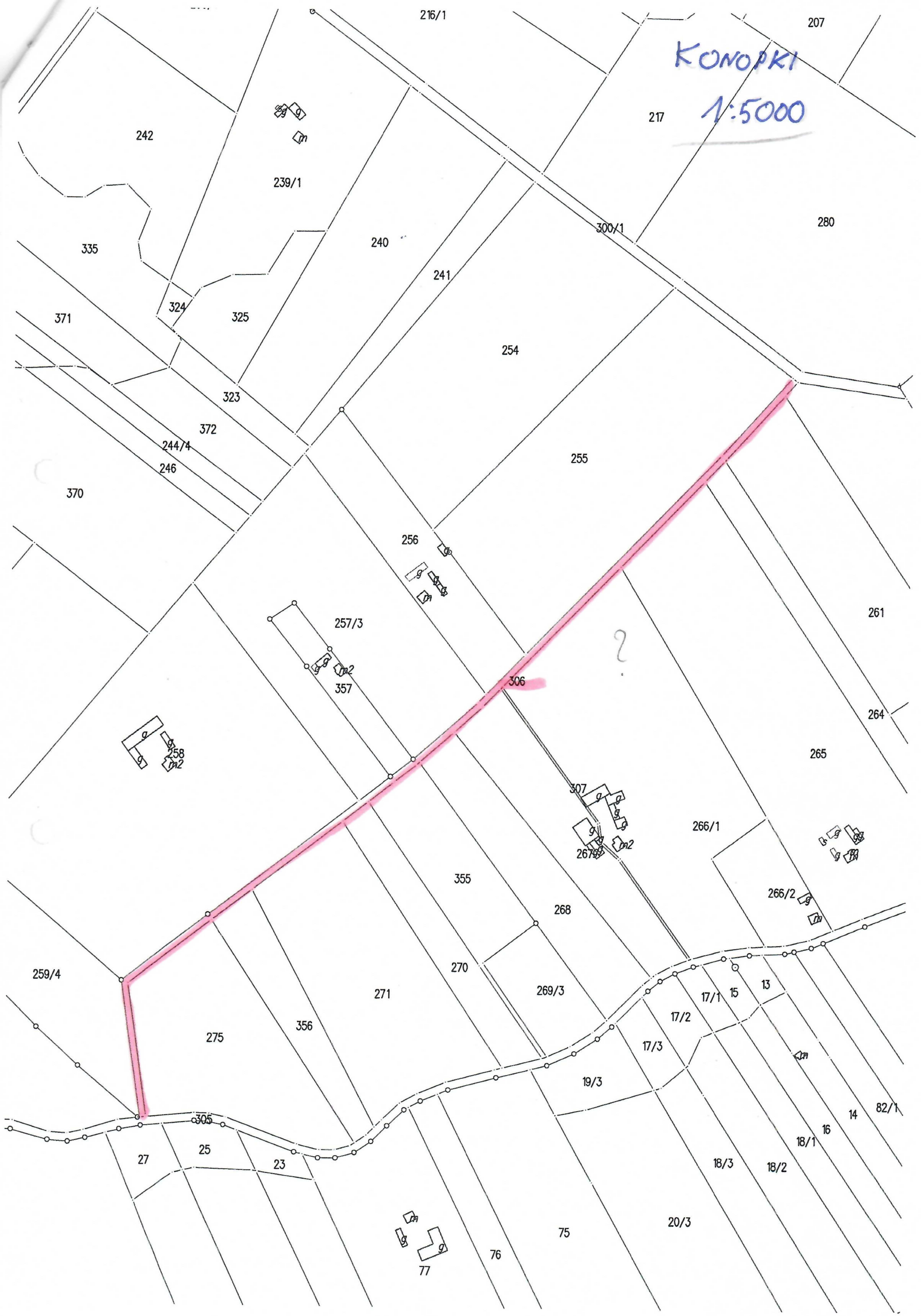
FLE SZE

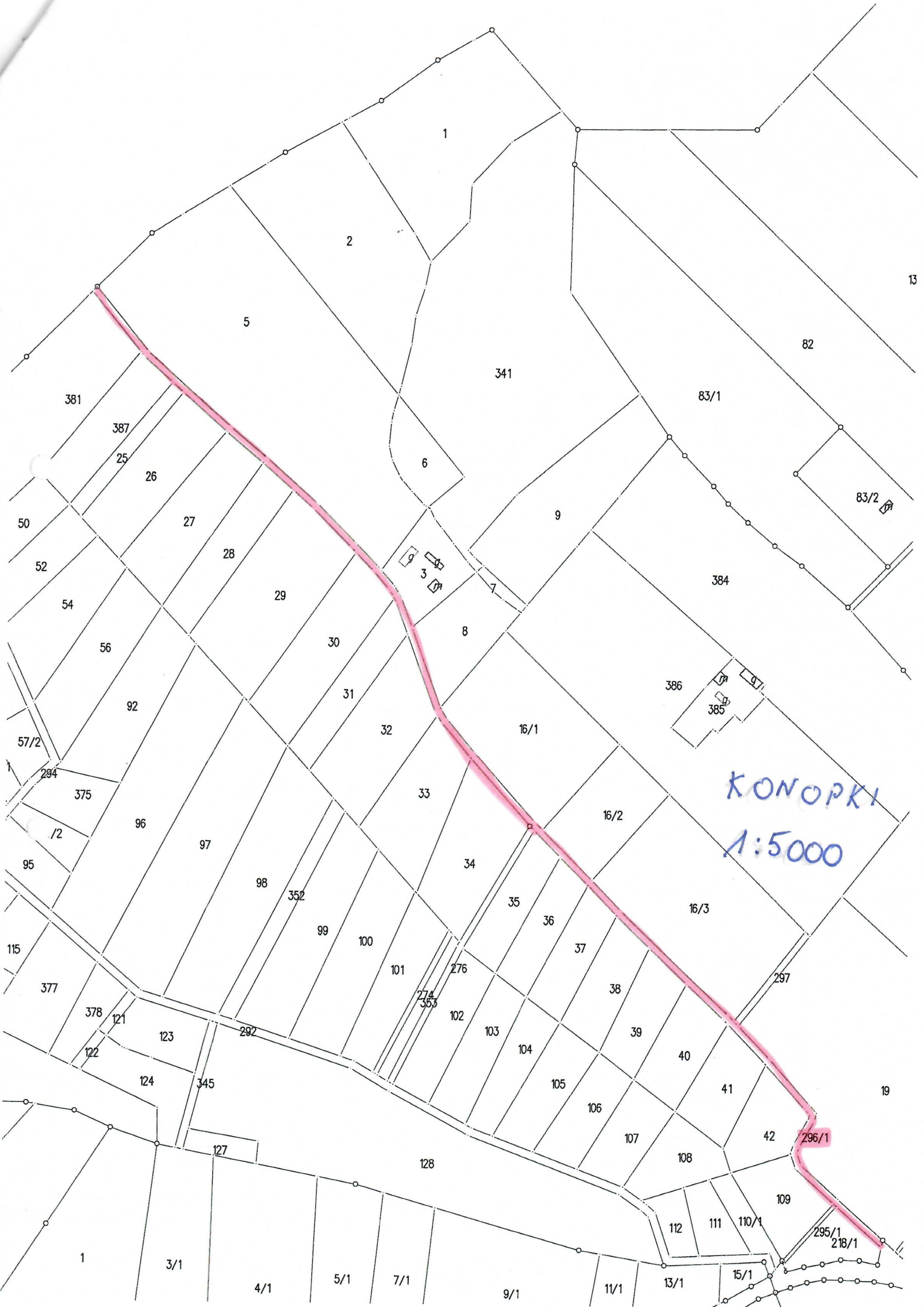
1:4000

99/3

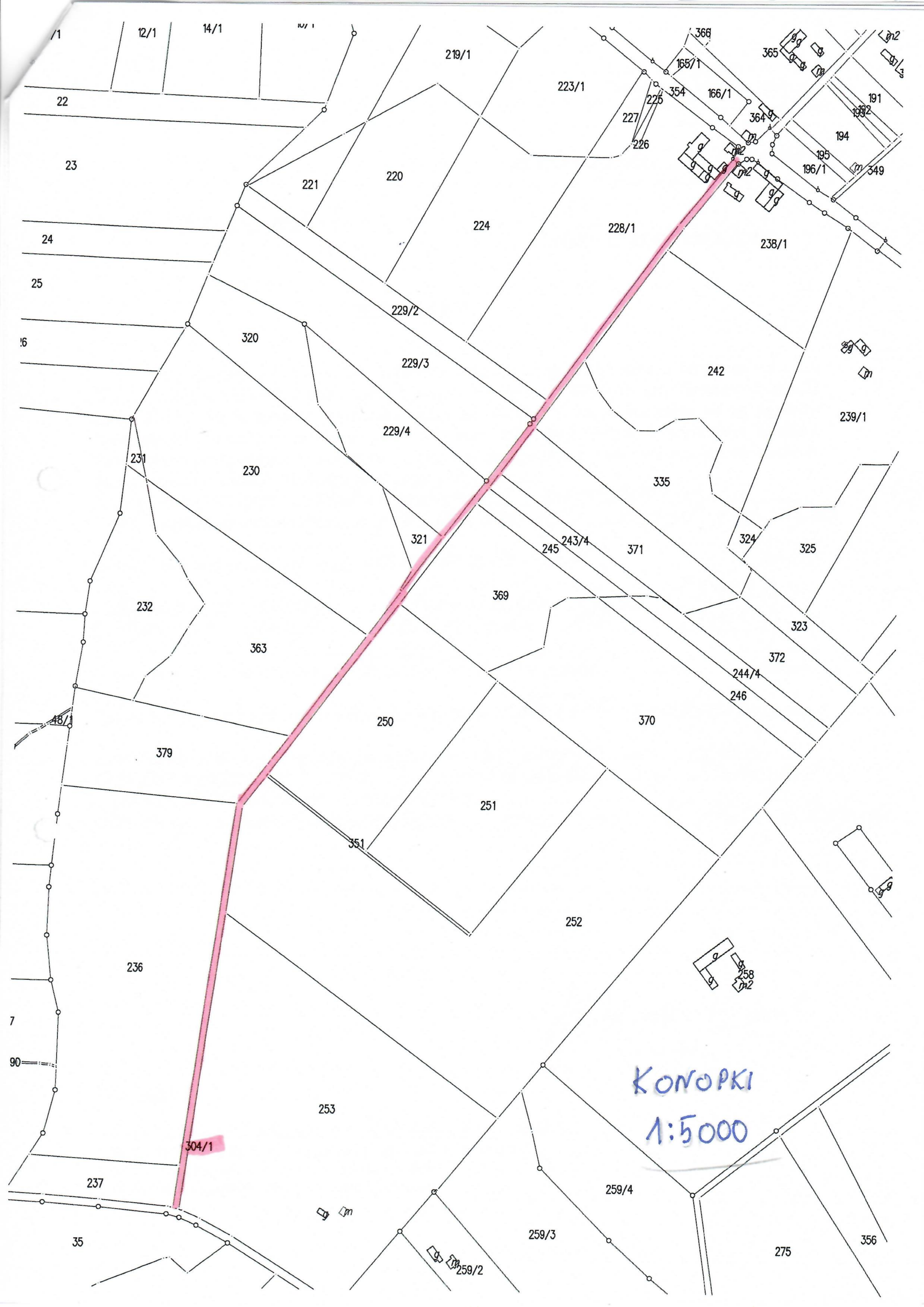


KONOPKI
1:5000



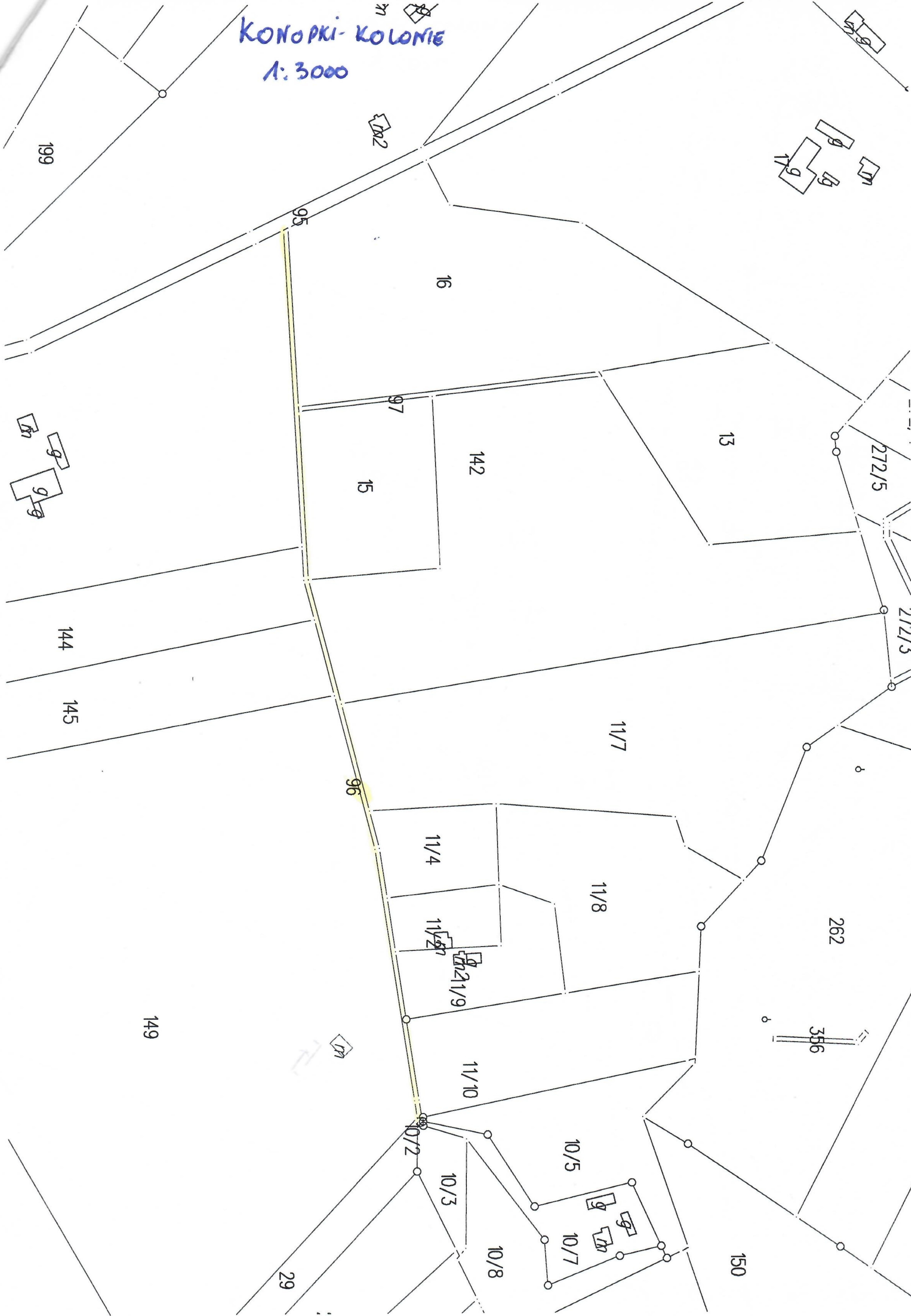


KONOPKI
1:5000



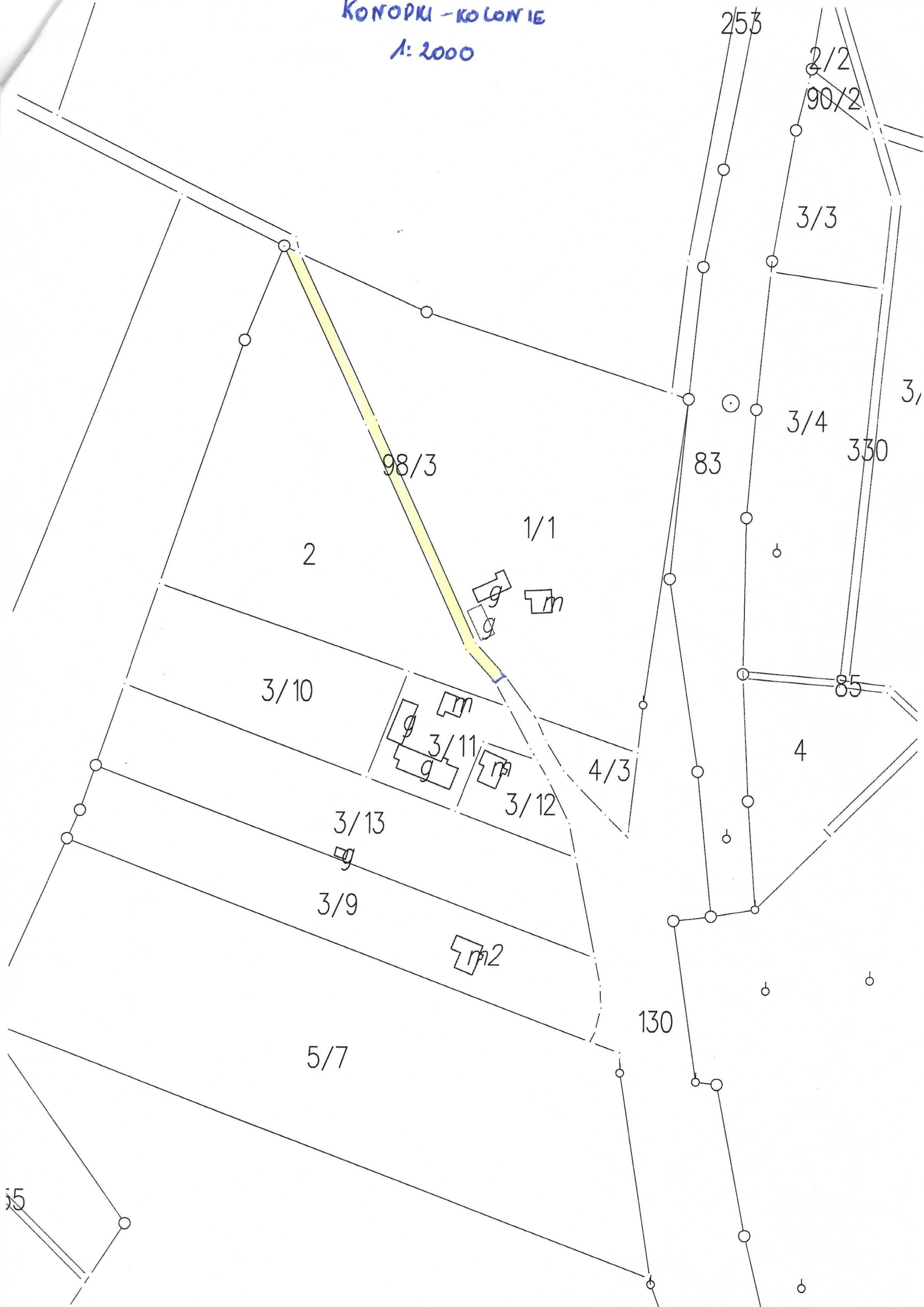
КОНОРКИ
1:5000

КОНОПКИ-КОЛОНИЕ
1:3000



КОНОРКИ - КОЛОНИЕ

1: 2000



LOS ENO

1: 3000



29-283

29-284

29-227/2

29-226

29-225

29-224

29-222/1

29-290

29-223/1

29-219/2

29-218

29-220/1

29-221/1

29-178

29-179

29-217

33-190

33-191

33-192

33-208

33-207

33-65/5

3



122

MODEL 1:5000



Plot 116000

15

19

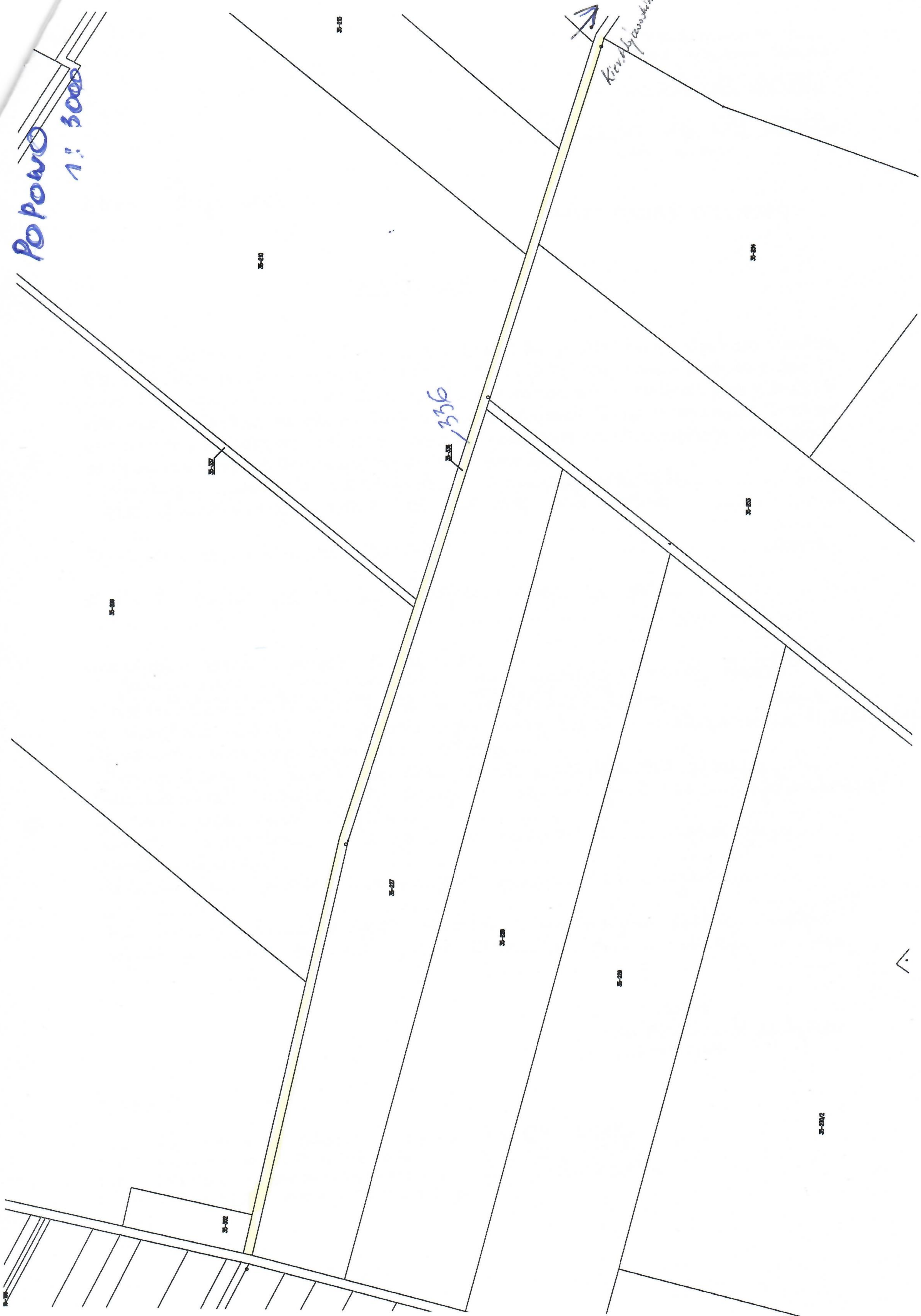
31



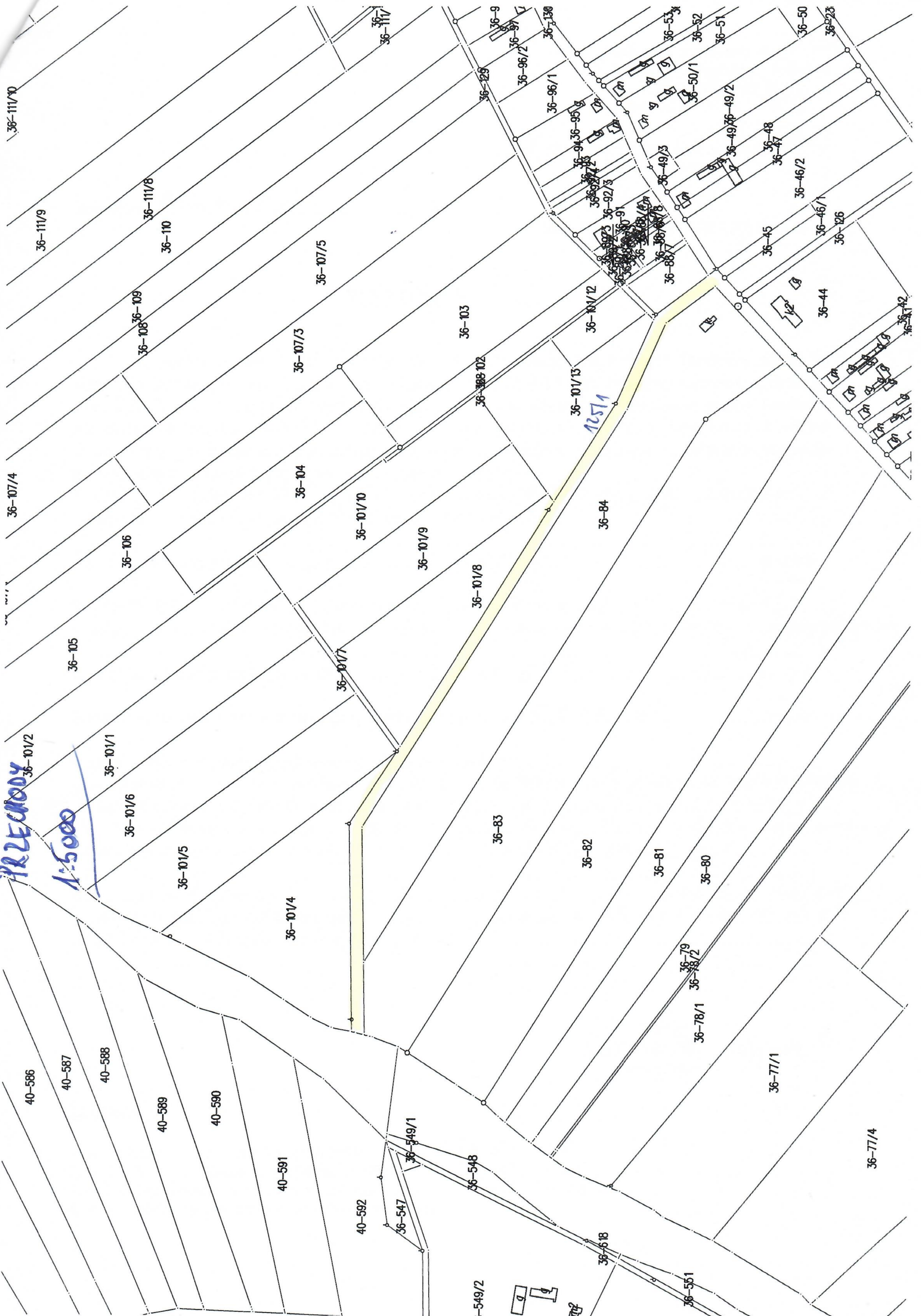
POPOVO
1:5000

Kendyevskaya
↗

963/336

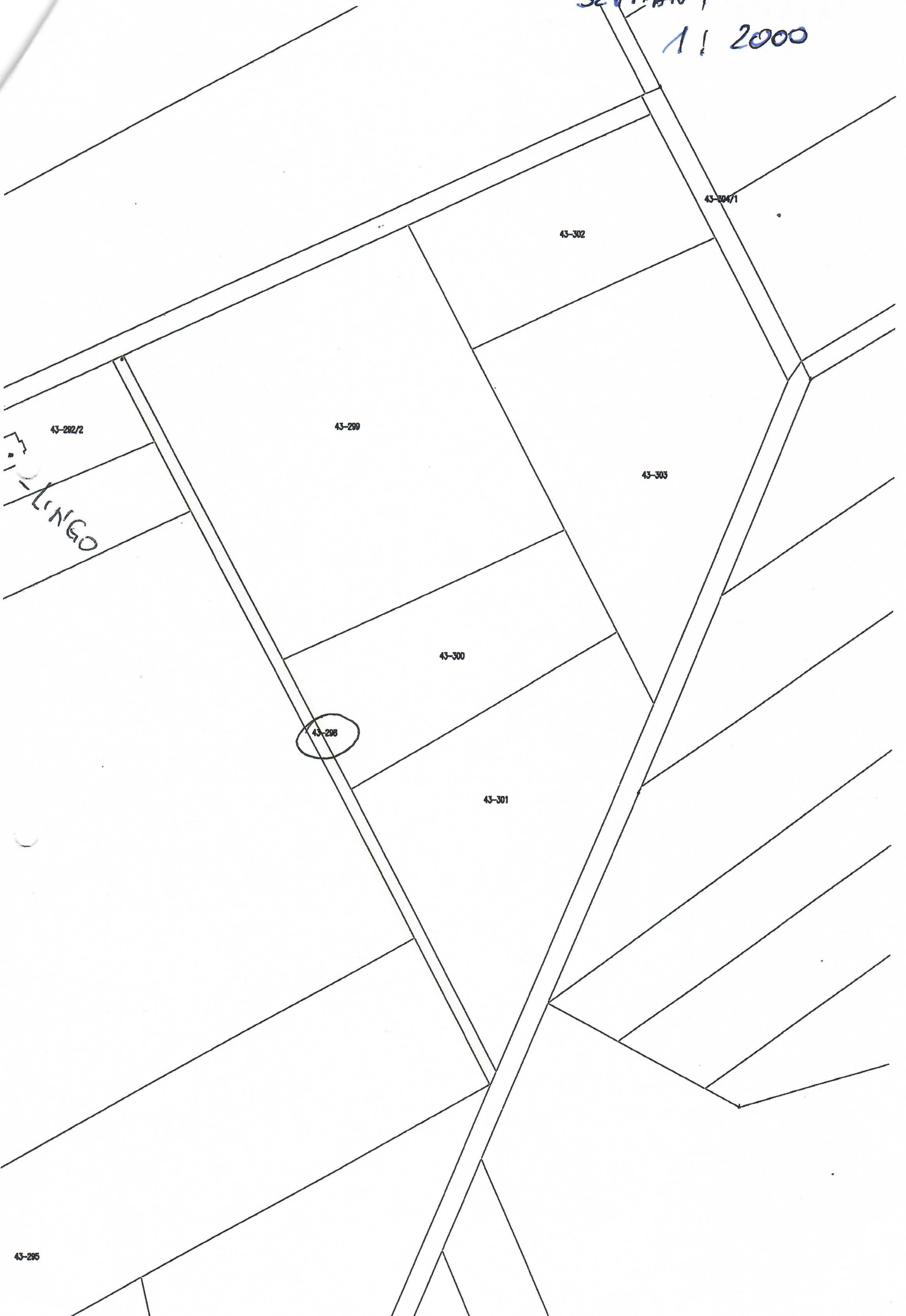


PRZECHOD
1:5000



SZYMAN Y

1: 2000



43-282/2
LUNGO

43-285

SZYMANŃ
1:2000

43-108/2

P. Kowalski D.

43-108/1

43-115

43-115

43-114

43-112/1

43-112/2

43-112/3

43-113/1

43-113

43-113/2

43-275

43-111

43-110

43-109

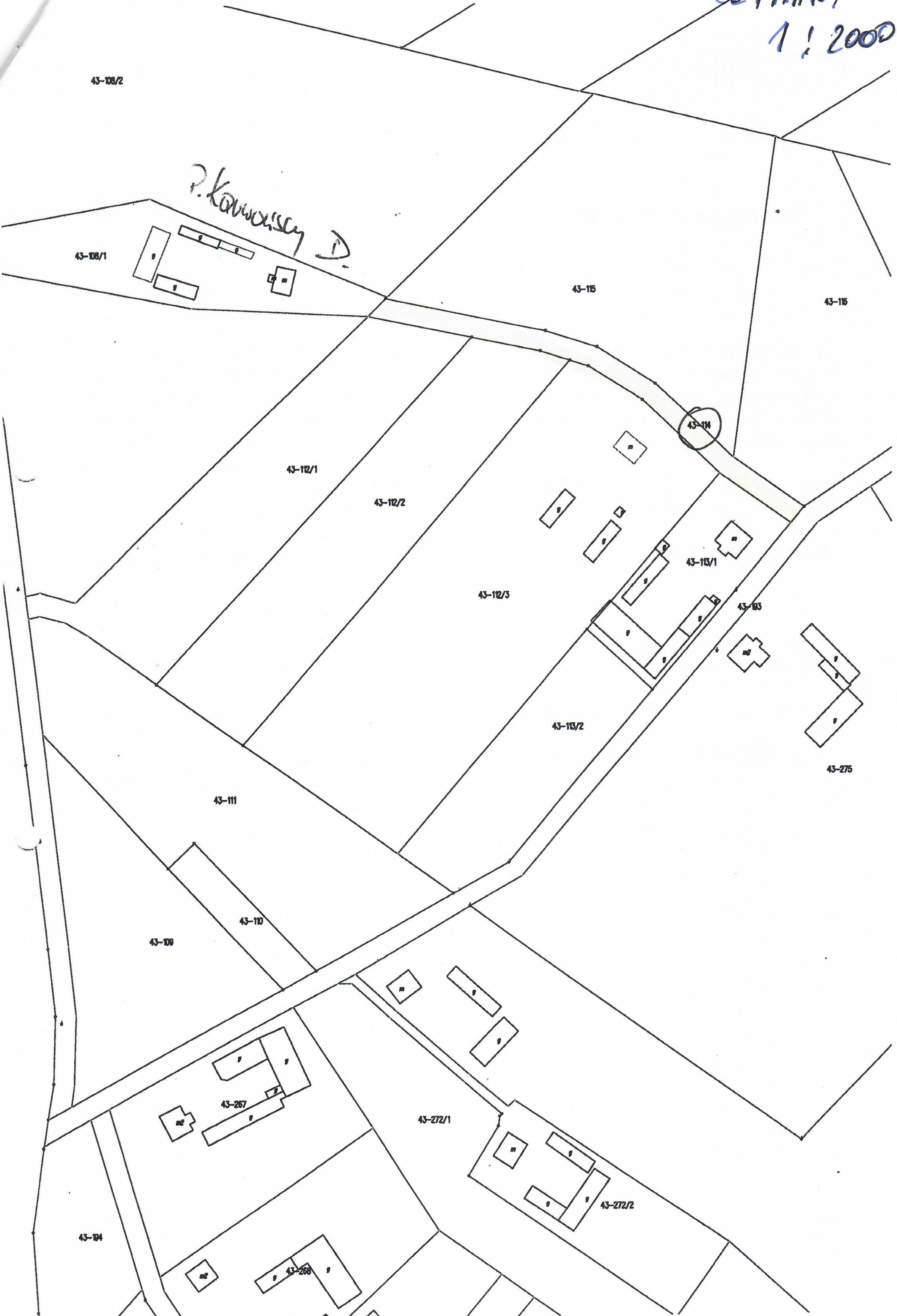
43-267

43-272/1

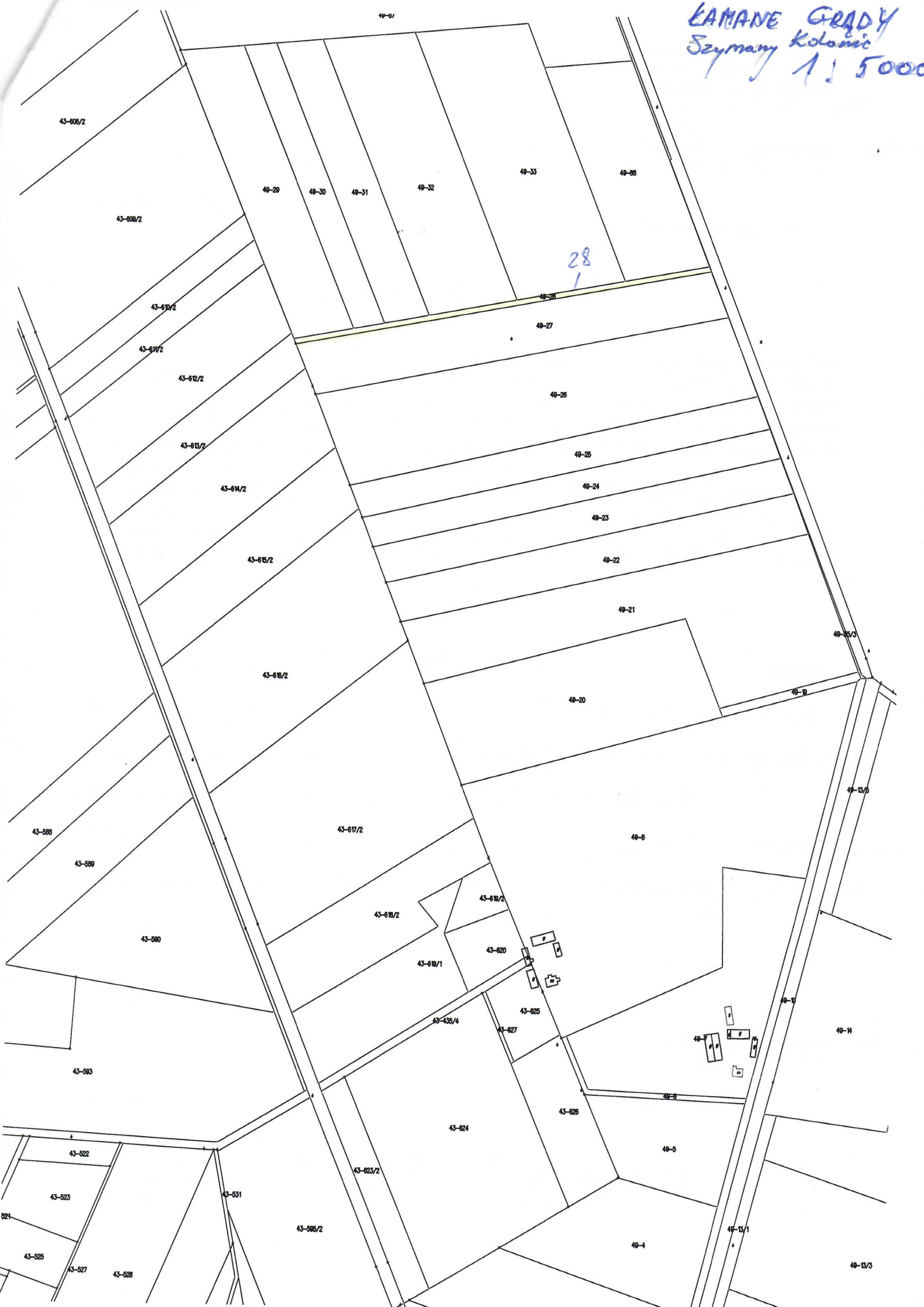
43-272/2

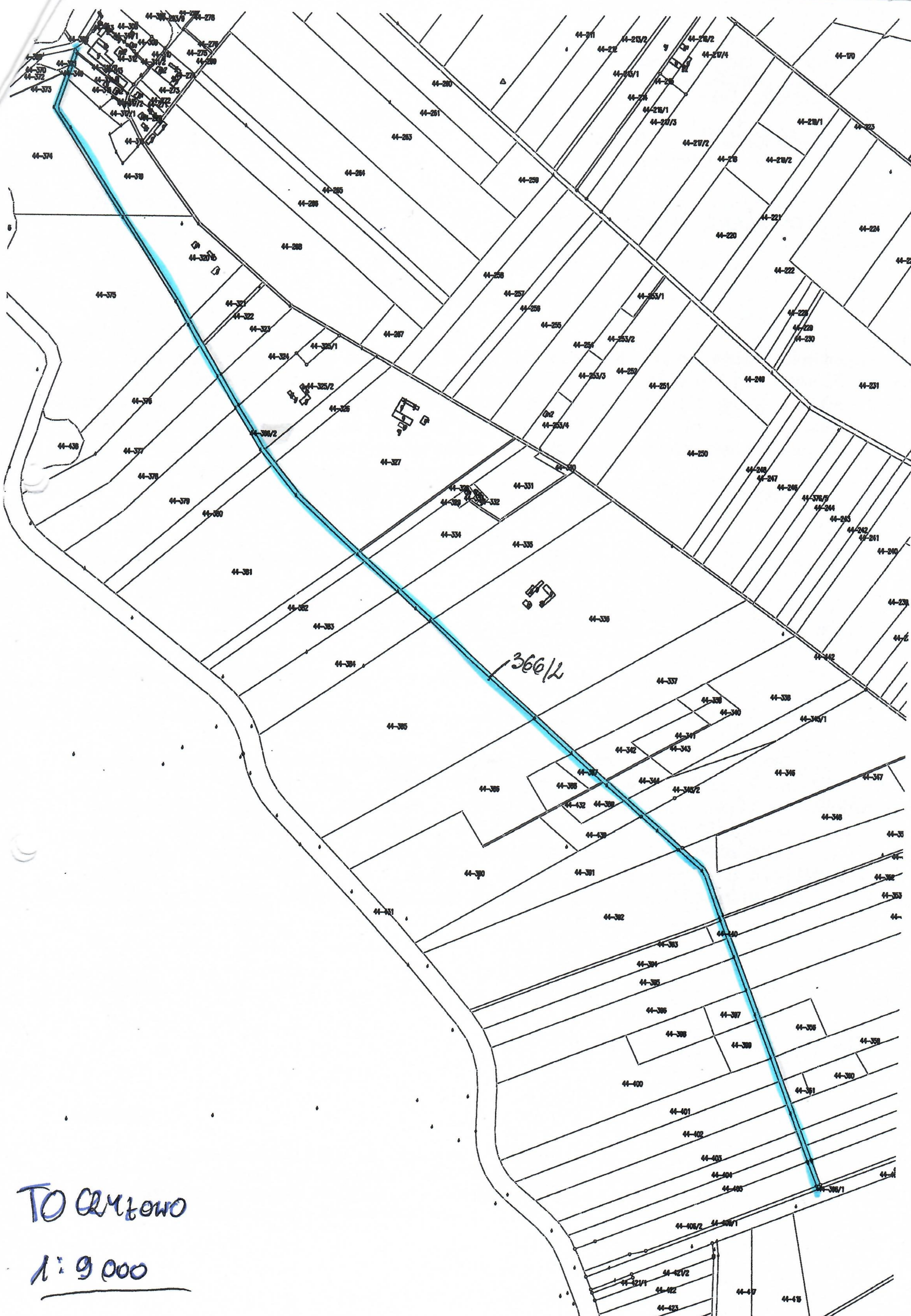
43-104

43-268



KAMANE GRADY
Szymany Kolonie
1:5000





TO QMLOWO
1:9000



U.S. CIA WKI
1:5000

WIERZBOWO

1:5000



